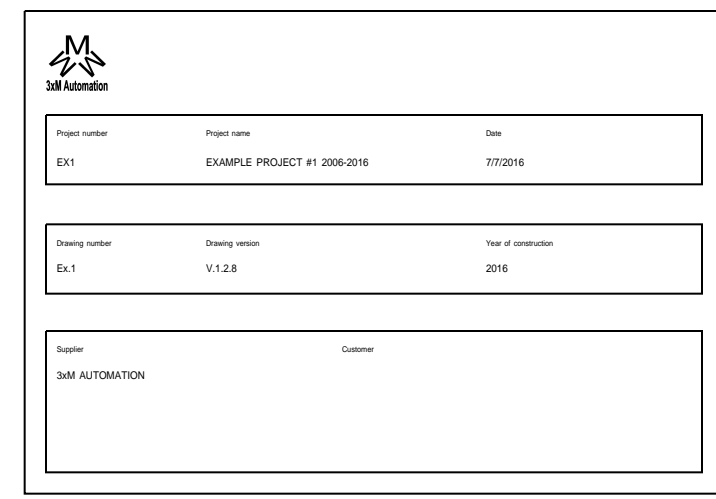


Project number	Project name	Date
EX1	EXAMPLE PROJECT #1 2006-2016	7/7/2016

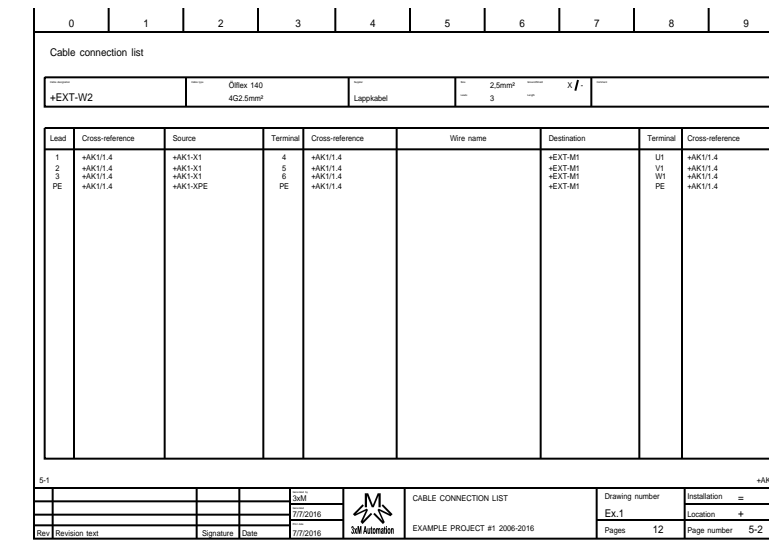
Drawing number	Drawing version	Year of construction
Ex.1	V.1.2.8	2016

Supplier	Customer
3xM AUTOMATION	

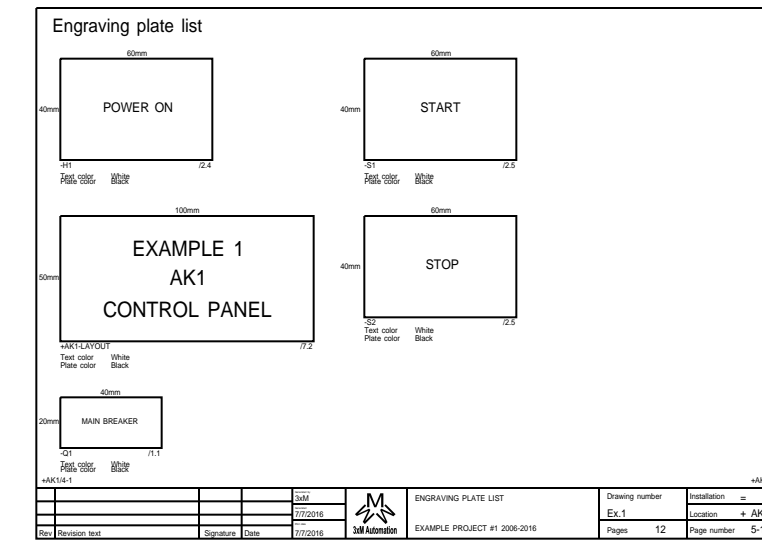
Table of contents



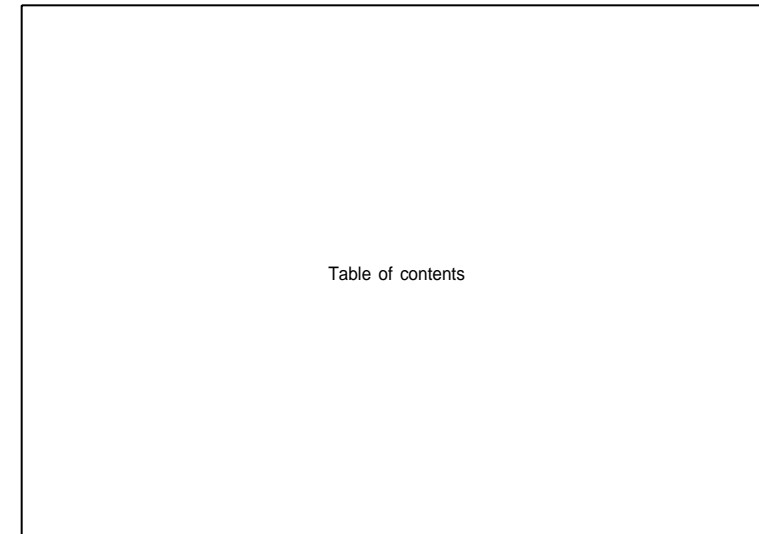
1



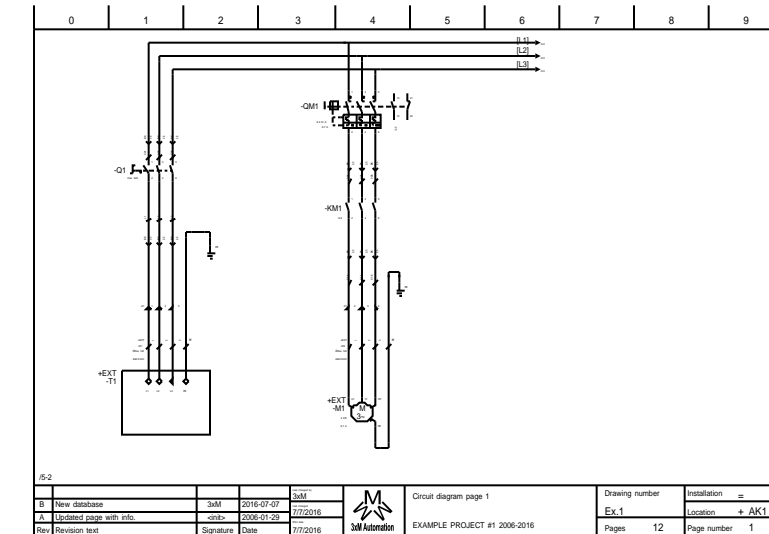
5-2



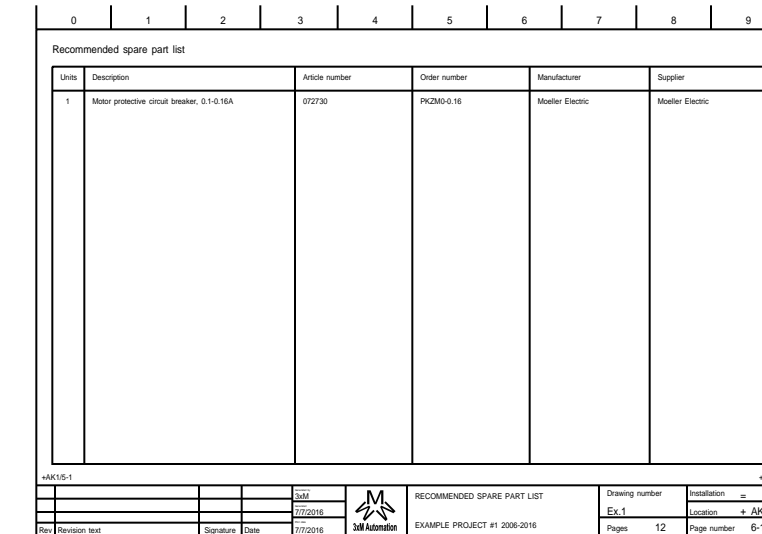
+AK1/5-1



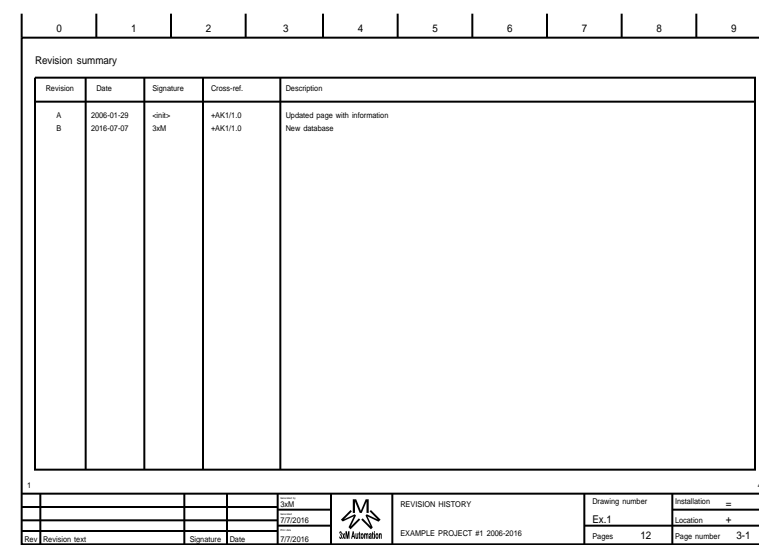
2-1



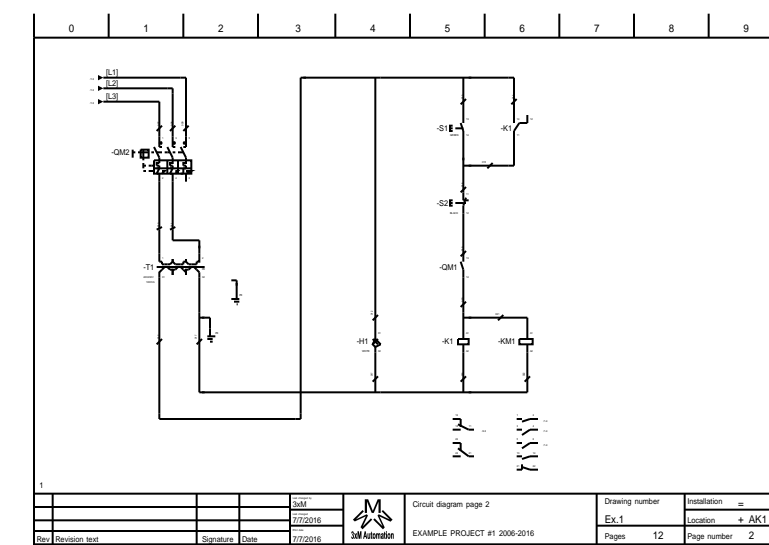
+AK1/1



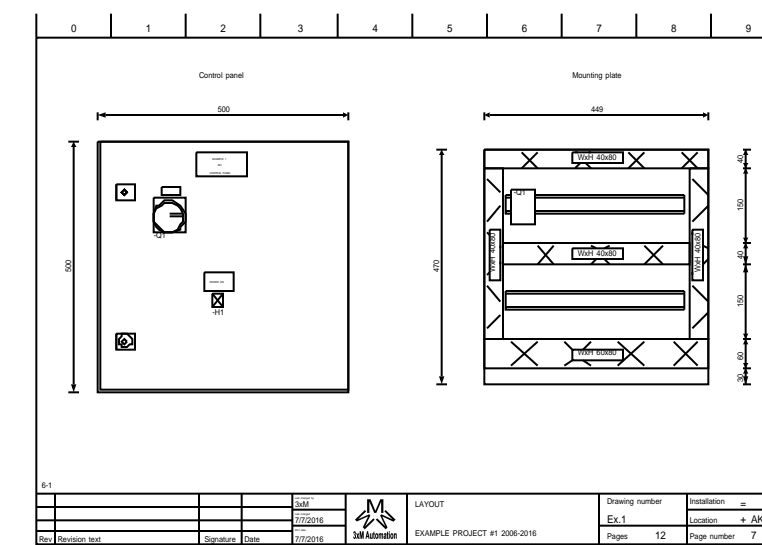
+AK1/6-1



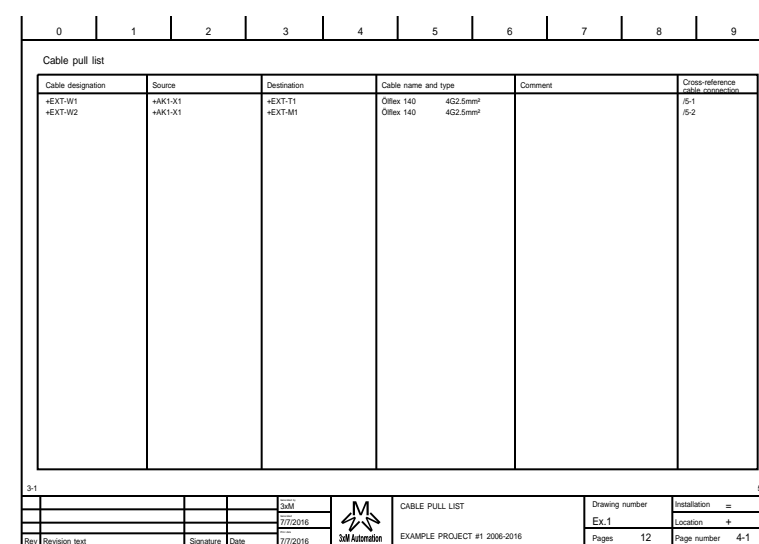
3-1



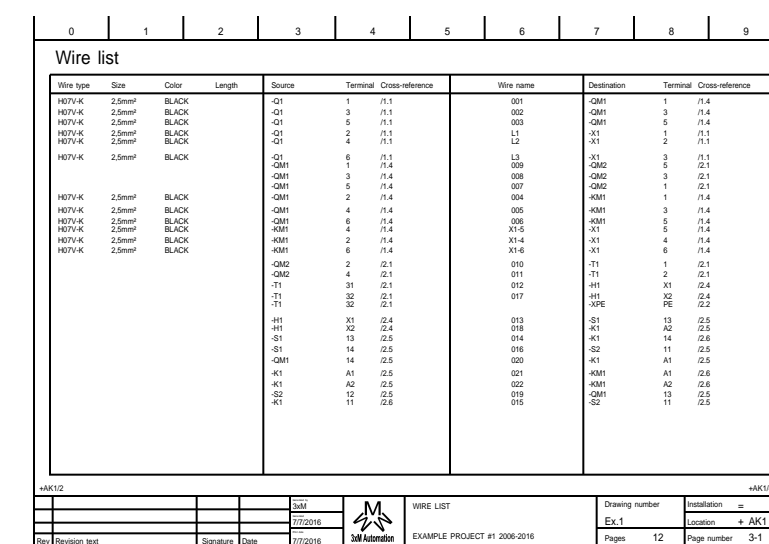
+AK1/2



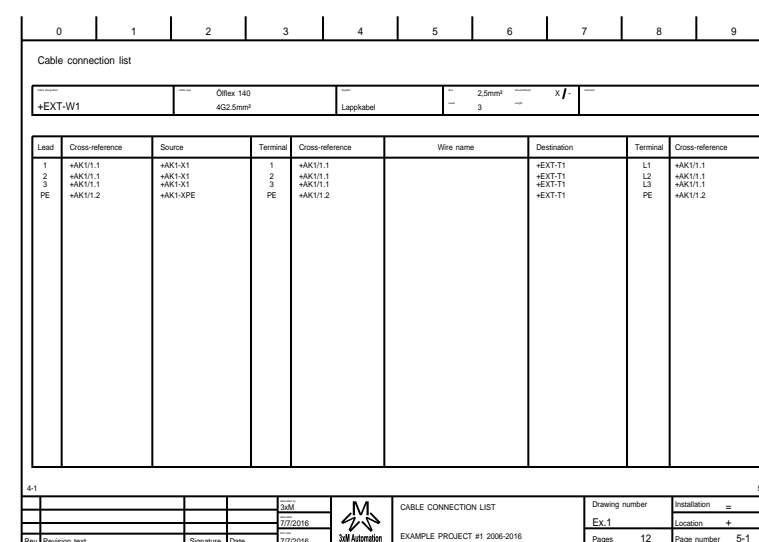
+AK1/7



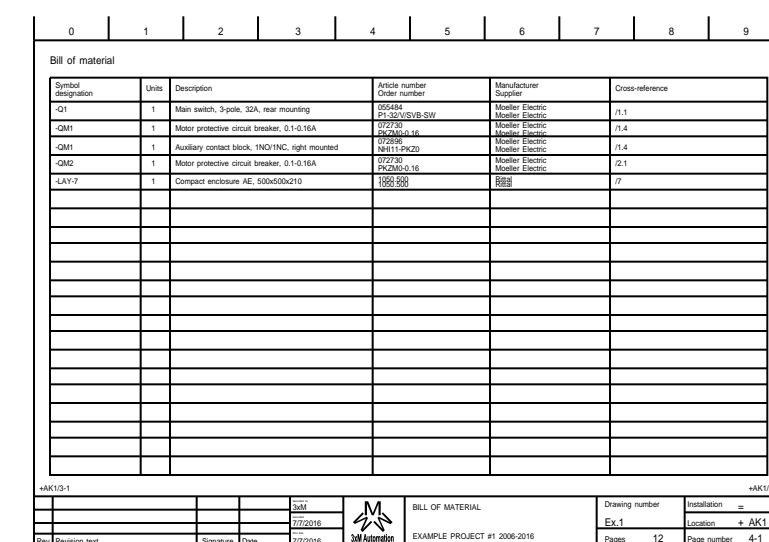
4-1



+AK1/3-1



5-1



+AK1/4-1

Rev	Revision text	Signature	Date
-----	---------------	-----------	------

Generated by
3xM
Generated
7/7/2016
Print date
7/7/2016

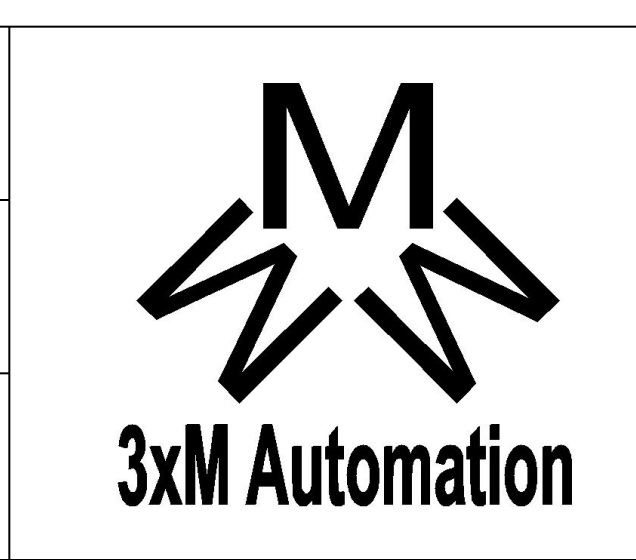


TABLE OF CONTENTS

EXAMPLE PROJECT #1 2006-2016

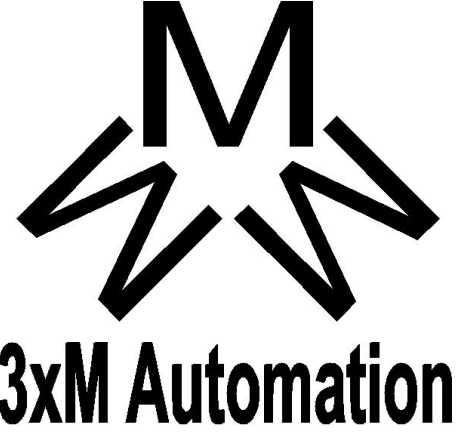
Drawing number
Ex.1

Pages **13**

Installation =
Location +
Page number **2-1**

Revision summary

Revision	Date	Signature	Cross-ref.	Description
A	2006-01-29	<init>	+AK1/1.0	Updated page with information
B	2016-07-07	3xM	+AK1/1.0	New database

				Generated by 3xM		REVISION HISTORY EXAMPLE PROJECT #1 2006-2016	Drawing number	Installation =
				Generated 7/7/2016			Ex.1	Location +
Rev	Revision text	Signature	Date	Print date 7/7/2016			Pages 13	Page number 3-1

0

1

2

3

4

5

6

7

8

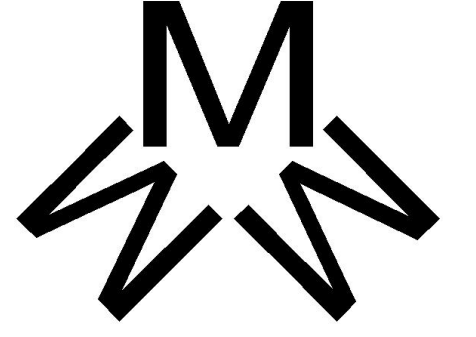
9

Cable pull list

Cable designation	Source	Destination	Cable name and type	Comment	Cross-reference cable connection
+EXT-W1 +EXT-W2	+AK1-X1 +AK1-X1	+EXT-T1 +EXT-M1	Ölflex 140 4G2.5mm ² Ölflex 140 4G2.5mm ²		/5-1 /5-2

3-1

5-1

				Generated by 3xM		CABLE PULL LIST	Drawing number	Installation =
				Generated 7/7/2016			Ex.1	Location +
Rev	Revision text	Signature	Date	Print date 7/7/2016			Pages 13	Page number 4-1
						EXAMPLE PROJECT #1 2006-2016		

0

1

2

3

4

5

6

7

8

9

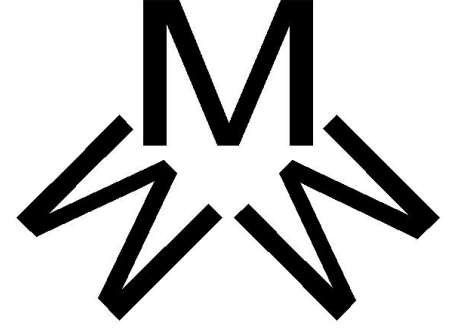
Cable connection list

Cable designation +EXT-W1	Cable type Ölflex 140 4G2.5mm²	Supplier Lappkabel	Size 2,5mm²	Ground/Shield X / -	Comment
			Leads 3	Length	

Lead	Cross-reference	Source	Terminal	Cross-reference	Wire name	Destination	Terminal	Cross-reference
1	+AK1/1.1	+AK1-X1	1	+AK1/1.1		+EXT-T1	L1	+AK1/1.1
2	+AK1/1.1	+AK1-X1	2	+AK1/1.1		+EXT-T1	L2	+AK1/1.1
3	+AK1/1.1	+AK1-X1	3	+AK1/1.1		+EXT-T1	L3	+AK1/1.1
PE	+AK1/1.2	+AK1-XPE	PE	+AK1/1.2		+EXT-T1	PE	+AK1/1.2

4-1

5-2

				Generated by 3xM	 3xM Automation	CABLE CONNECTION LIST	Drawing number	Installation =
				Generated 7/7/2016			Ex.1	Location +
Rev	Revision text	Signature	Date	Print date 7/7/2016			Pages 13	Page number 5-1
						EXAMPLE PROJECT #1 2006-2016		

0

1

2

3

4

5

6

7

8

9

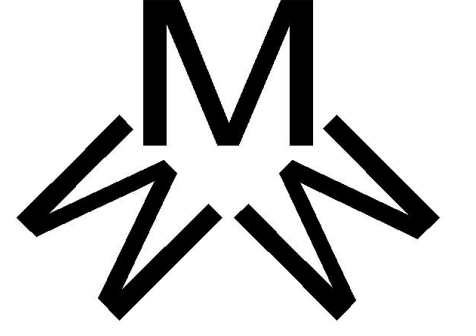
Cable connection list

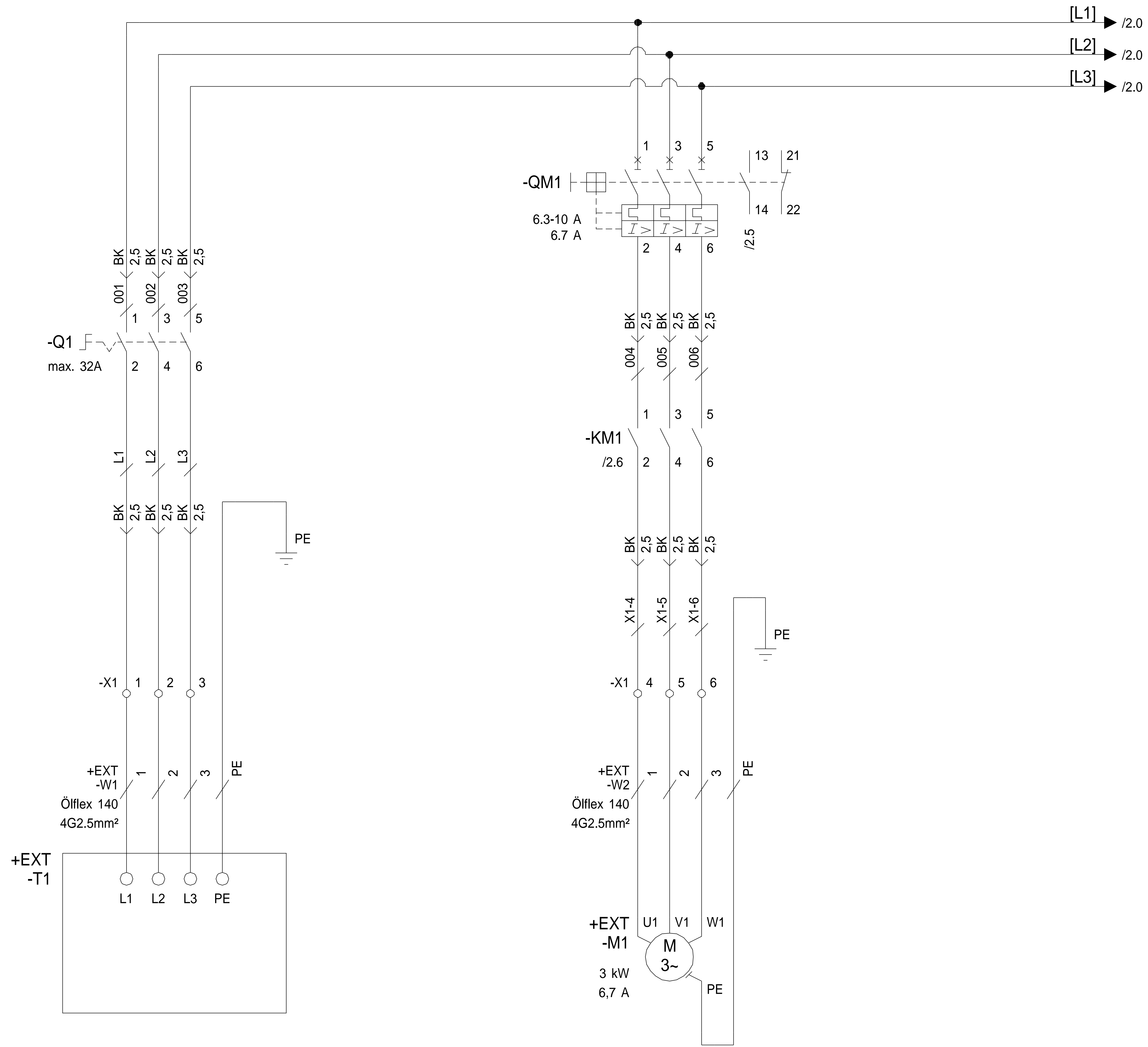
Cable designation +EXT-W2	Cable type Ölflex 140 4G2.5mm²	Supplier Lappkabel	Size 2,5mm²	Ground/Shield X / -	Comment
			Leads 3	Length	

Lead	Cross-reference	Source	Terminal	Cross-reference	Wire name	Destination	Terminal	Cross-reference
1	+AK1/1.4	+AK1-X1	4	+AK1/1.4		+EXT-M1	U1	+AK1/1.4
2	+AK1/1.4	+AK1-X1	5	+AK1/1.4		+EXT-M1	V1	+AK1/1.4
3	+AK1/1.4	+AK1-X1	6	+AK1/1.4		+EXT-M1	W1	+AK1/1.4
PE	+AK1/1.4	+AK1-XPE	PE	+AK1/1.4		+EXT-M1	PE	+AK1/1.4

5-1

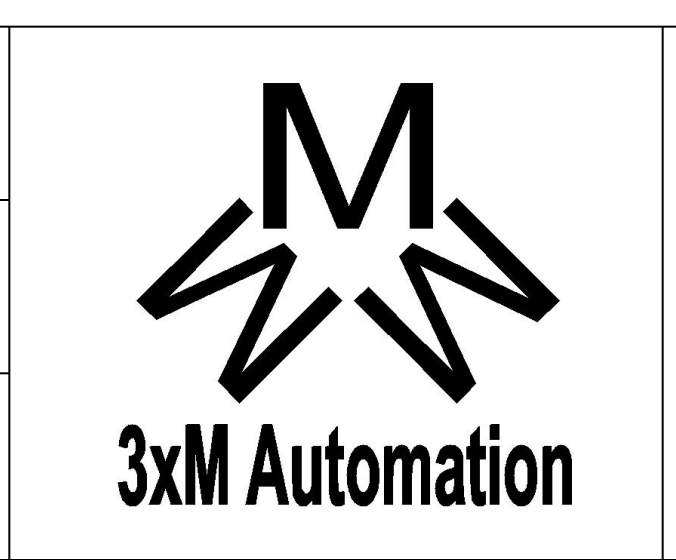
+AK1/1

				Generated by 3xM	 3xM Automation	CABLE CONNECTION LIST	Drawing number	Installation =
				Generated 7/7/2016			Ex.1	Location +
Rev	Revision text	Signature	Date	Print date 7/7/2016			Pages 13	Page number 5-2



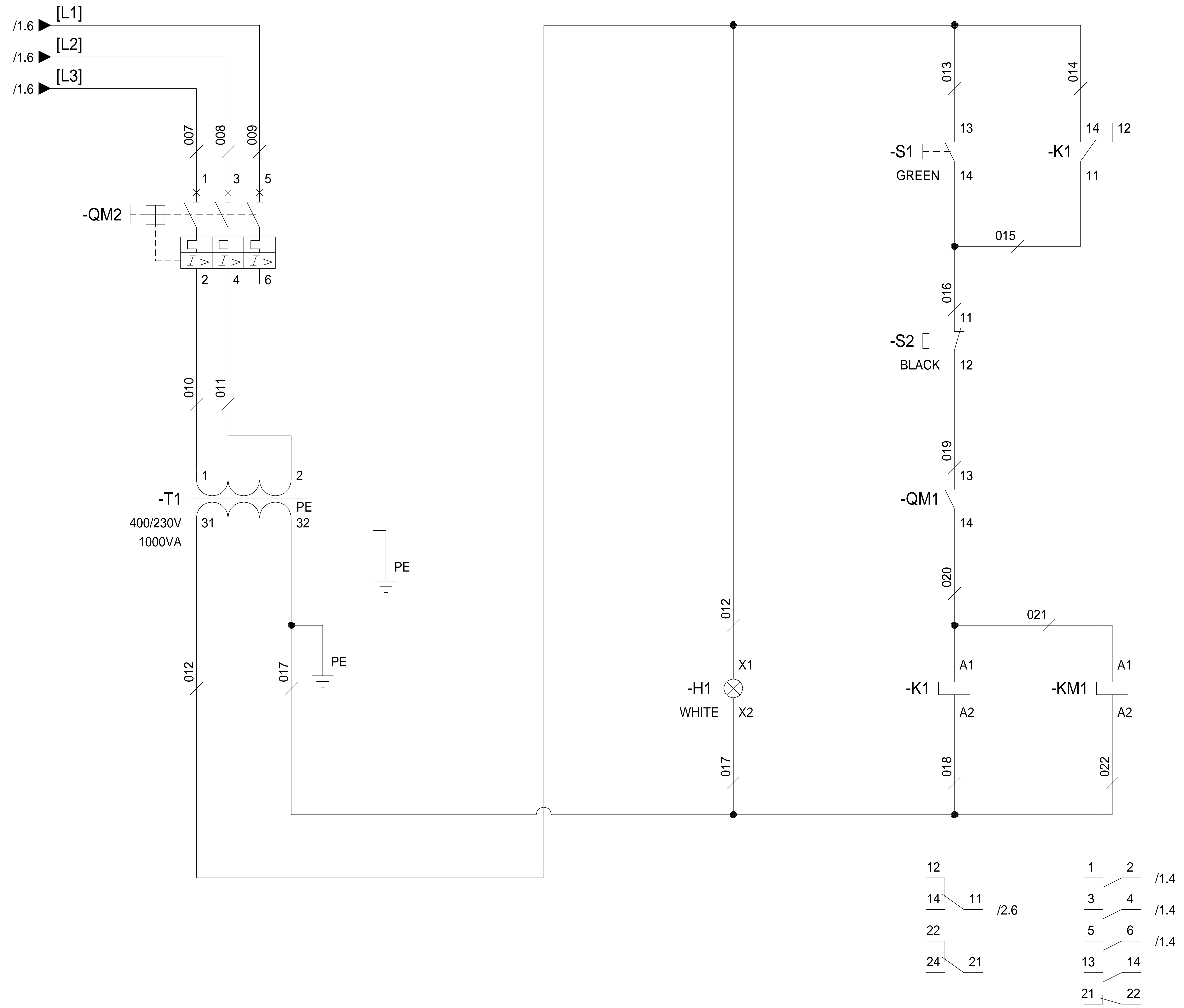
Rev	Revision text	Signature	Date
B	New database	3xM	2016-07-07
A	Updated page with info.	<init>	2006-01-29

Last changed by	3xM
Last changed	7/7/2016
Print date	7/7/2016



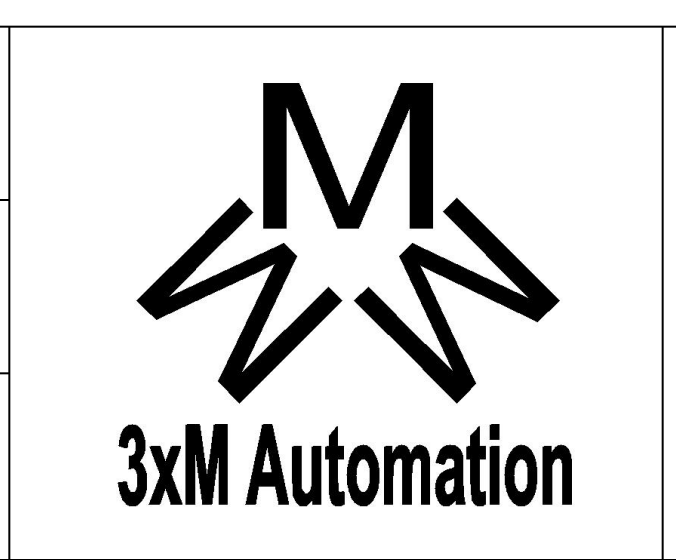
Circuit diagram page 1
 EXAMPLE PROJECT #1 2006-2016

Drawing number	Ex.1	Installation	=
Pages	13	Location	+ AK1
		Page number	1



Rev	Revision text	Signature	Date
-----	---------------	-----------	------

Last changed by 3xM
Last changed 7/7/2016
Print date 7/7/2016



Circuit diagram page 2

EXAMPLE PROJECT #1 2006-2016

Drawing number	Ex.1
Pages	13

Installation	=
Location	+ AK1
Page number	2

0

1

2

3

4

5

6

7

8

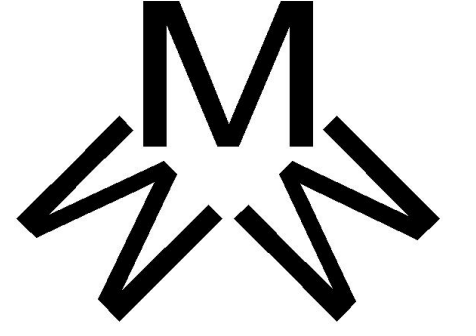
9

Wire list

Wire type	Size	Color	Length	Source	Terminal	Cross-reference	Wire name	Destination	Terminal	Cross-reference
H07V-K	2,5mm ²	BLACK		-Q1	1	/1.1	001	-QM1	1	/1.4
H07V-K	2,5mm ²	BLACK		-Q1	3	/1.1	002	-QM1	3	/1.4
H07V-K	2,5mm ²	BLACK		-Q1	5	/1.1	003	-QM1	5	/1.4
H07V-K	2,5mm ²	BLACK		-Q1	2	/1.1	L1	-X1	1	/1.1
H07V-K	2,5mm ²	BLACK		-Q1	4	/1.1	L2	-X1	2	/1.1
H07V-K	2,5mm ²	BLACK		-Q1	6	/1.1	L3	-X1	3	/1.1
				-QM1	1	/1.4	009	-QM2	5	/2.1
				-QM1	3	/1.4	008	-QM2	3	/2.1
				-QM1	5	/1.4	007	-QM2	1	/2.1
H07V-K	2,5mm ²	BLACK		-QM1	2	/1.4	004	-KM1	1	/1.4
H07V-K	2,5mm ²	BLACK		-QM1	4	/1.4	005	-KM1	3	/1.4
H07V-K	2,5mm ²	BLACK		-QM1	6	/1.4	006	-KM1	5	/1.4
H07V-K	2,5mm ²	BLACK		-KM1	4	/1.4	X1-5	-X1	5	/1.4
H07V-K	2,5mm ²	BLACK		-KM1	2	/1.4	X1-4	-X1	4	/1.4
H07V-K	2,5mm ²	BLACK		-KM1	6	/1.4	X1-6	-X1	6	/1.4
				-QM2	2	/2.1	010	-T1	1	/2.1
				-QM2	4	/2.1	011	-T1	2	/2.1
				-T1	31	/2.1	012	-H1	X1	/2.4
				-T1	32	/2.1	017	-H1	X2	/2.4
				-T1	32	/2.1		-XPE	PE	/2.2
				-H1	X1	/2.4	013	-S1	13	/2.5
				-H1	X2	/2.4	018	-K1	A2	/2.5
				-S1	13	/2.5	014	-K1	14	/2.6
				-S1	14	/2.5	016	-S2	11	/2.5
				-QM1	14	/2.5	020	-K1	A1	/2.5
				-K1	A1	/2.5	021	-KM1	A1	/2.6
				-K1	A2	/2.5	022	-KM1	A2	/2.6
				-S2	12	/2.5	019	-QM1	13	/2.5
				-K1	11	/2.6	015	-S2	11	/2.5

+AK1/2

+AK1/4-1

				Generated by 3xM	 3xM Automation	WIRE LIST EXAMPLE PROJECT #1 2006-2016	Drawing number	Installation =
				Generated 7/7/2016			Ex.1	Location + AK1
Rev	Revision text	Signature	Date	Print date 7/7/2016			Pages 13	Page number 3-1

0

1

2

3

4

5

6

7

8

9

Bill of material

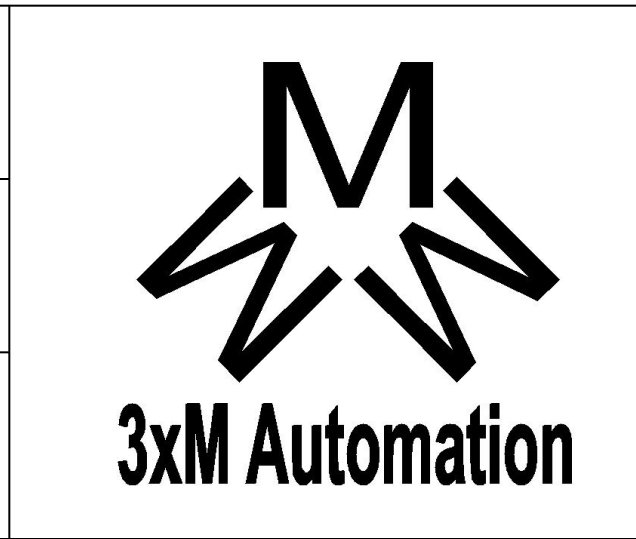
Symbol designation	Units	Description	Article number Order number	Manufacturer Supplier	Cross-reference
-Q1	1	Main switch, 3-pole, 32A, rear mounting	055484 P1-32/V/SVB-SW	Moeller Electric Moeller Electric	/1.1
-QM1	1	Motor protective circuit breaker, 0.1-0.16A	072730 PKZM0-0.16	Moeller Electric Moeller Electric	/1.4
-QM1	1	Auxiliary contact block, 1NO/1NC, right mounted	072896 NHI11-PKZ0	Moeller Electric Moeller Electric	/1.4
-QM2	1	Motor protective circuit breaker, 0.1-0.16A	072730 PKZM0-0.16	Moeller Electric Moeller Electric	/2.1
-LAY-7	1	Compact enclosure AE, 500x500x210	1050.500 1050.500	Rittal Rittal	/7

+AK1/3-1

+AK1/5-1

Rev	Revision text	Signature	Date
-----	---------------	-----------	------

Generated by	3xM
Generated	7/7/2016
Print date	7/7/2016



BILL OF MATERIAL

EXAMPLE PROJECT #1 2006-2016

Drawing number
Ex.1

Pages **13**

Installation	=
Location	+ AK1
Page number	4-1

Engraving plate list

60mm

40mm

POWER ON

-H1 /2.4

Text color White
Plate color Black

60mm

40mm

START

-S1 /2.5

Text color White
Plate color Black

100mm

50mm

EXAMPLE 1

AK1

CONTROL PANEL

+AK1-LAYOUT /7.2

Text color White
Plate color Black

60mm

40mm

STOP

-S2 /2.5

Text color White
Plate color Black

40mm

20mm

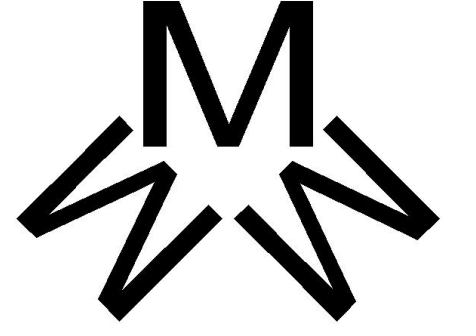
MAIN BREAKER

-Q1 /1.1

Text color White
Plate color Black

+AK1/4-1

+AK1/6-1

				Generated by 3xM	 3xM Automation	ENGRAVING PLATE LIST	Drawing number	Installation =
				Generated 7/7/2016		EXAMPLE PROJECT #1 2006-2016	Ex.1	Location + AK1
Rev	Revision text	Signature	Date	Print date 7/7/2016			Pages 13	Page number 5-1

0

1

2

3

4

5

6

7

8

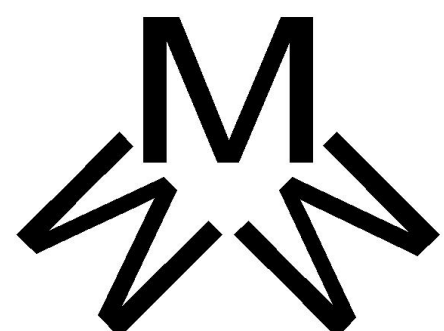
9

Recommended spare part list

Units	Description	Article number	Order number	Manufacturer	Supplier
1	Motor protective circuit breaker, 0.1-0.16A	072730	PKZM0-0.16	Moeller Electric	Moeller Electric

+AK1/5-1

+AK1/7

				Generated by 3xM		RECOMMENDED SPARE PART LIST	Drawing number	Installation =
				Generated 7/7/2016		EXAMPLE PROJECT #1 2006-2016	Ex.1	Location + AK1
Rev	Revision text	Signature	Date	Print date 7/7/2016		Pages 13	Page number 6-1	

0

1

2

3

4

5

6

7

8

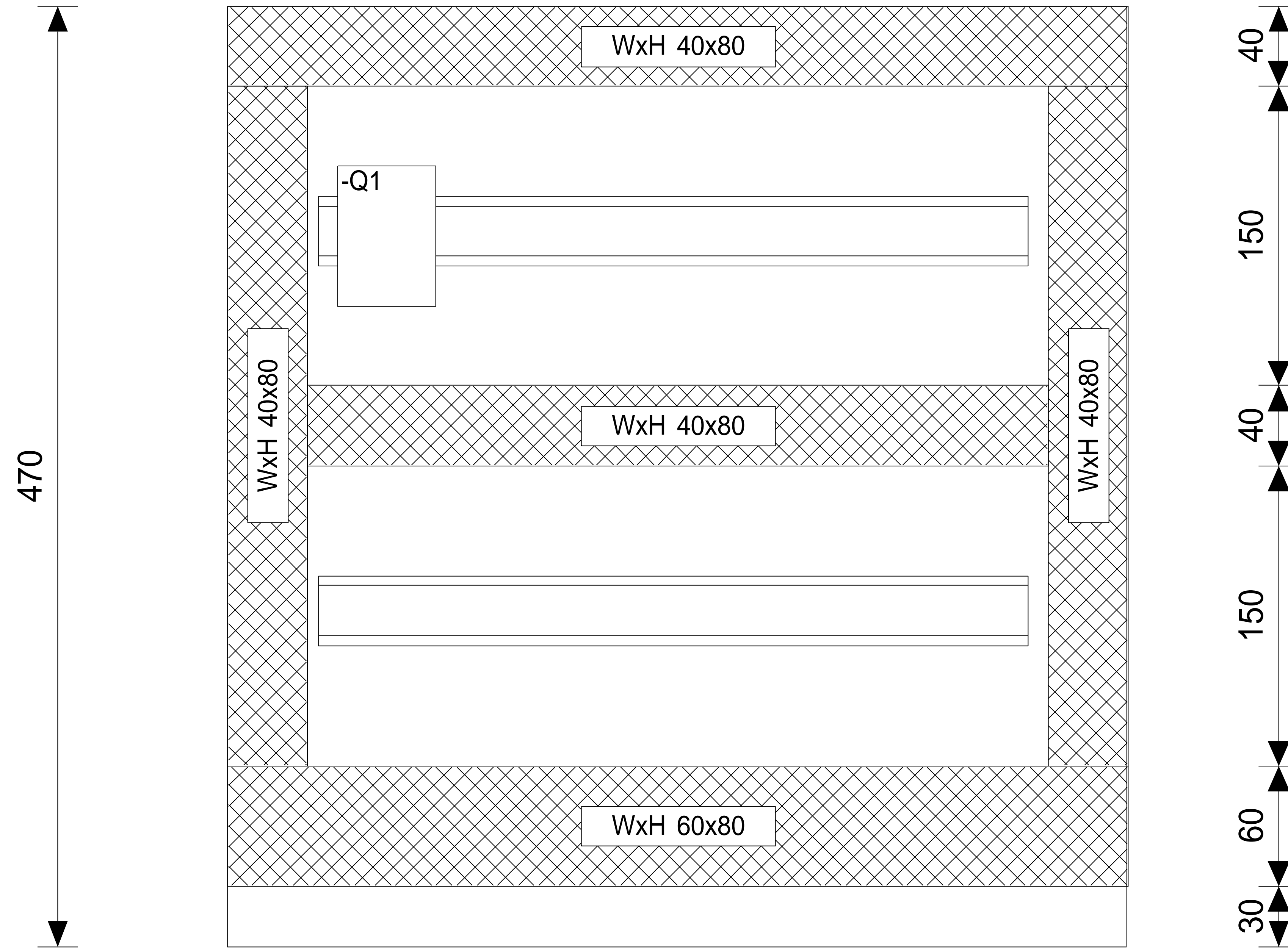
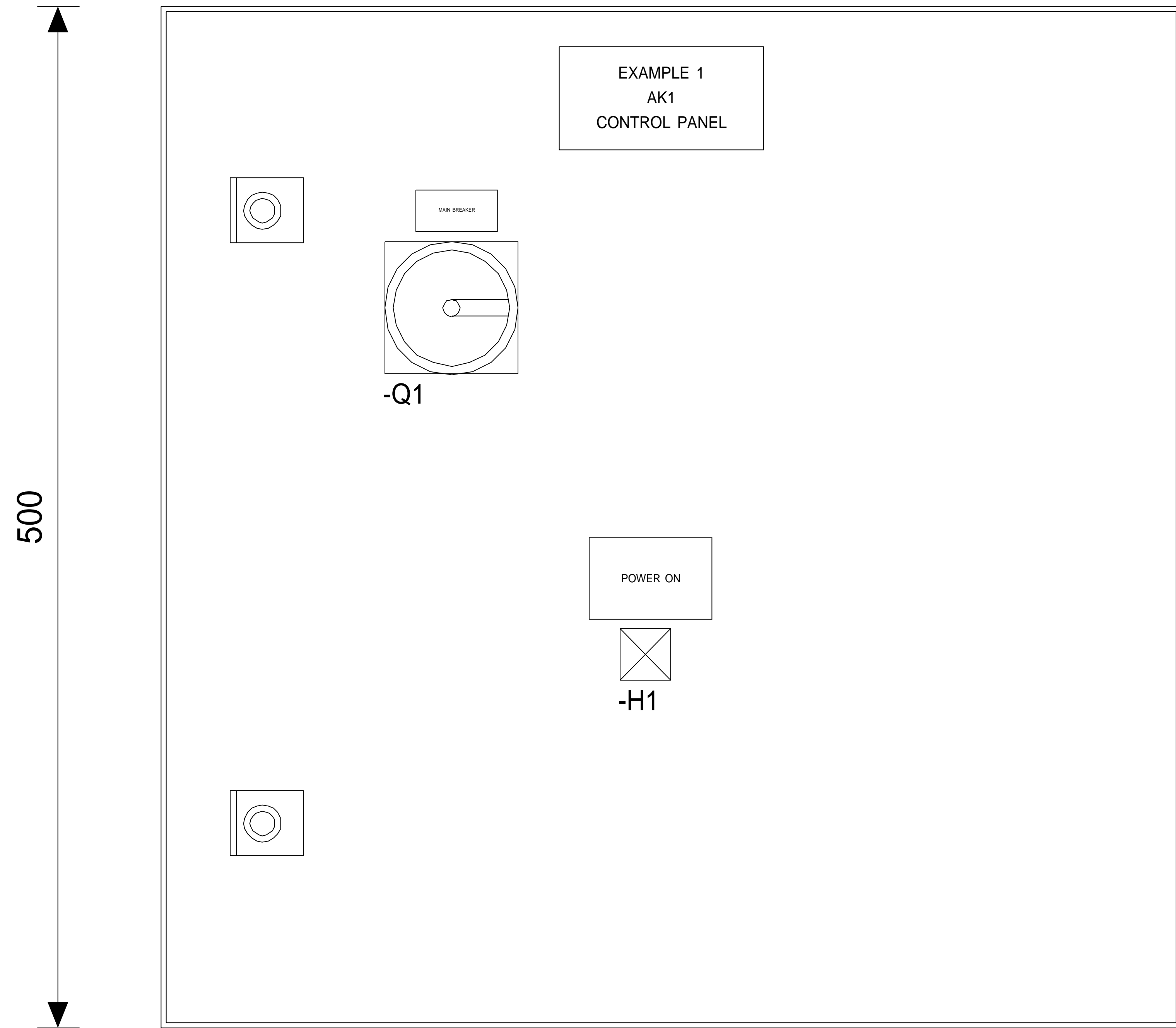
9

Control panel

Mounting plate

500

449



6-1

Rev	Revision text	Signature	Date
-----	---------------	-----------	------

Last changed by 3xM
Last changed 7/7/2016
Print date 7/7/2016



LAYOUT
EXAMPLE PROJECT #1 2006-2016

Drawing number	Ex.1
Pages	13

Installation	=
Location	+ AK1
Page number	7